

**THE MORE YOU KNOW
THE MORE YOU SEE
WWW.SAFERTOKNOW.INFO**



CHILD SEXUAL EXPLOITATION WHAT YOU CAN DO NOW

If a child or young person is in immediate danger call **999** or contact the Police on **101**

You can also speak to Crimestoppers anonymously on **0800 555 111** or the NSPCC adult Helpline on **0808 800 5000**

THERE ARE ALSO OTHER ORGANISATIONS YOU CAN TALK TO IF YOU HAVE CONCERNS

Barnardo's NI Safe Choices **028 9065 8511**

Social Services Gateway Teams

Belfast HSC Trust T: **028 9050 7000**

South Eastern HSC Trust T: **0300 1000 300**

Northern HSC Trust T: **0300 1234 333**

Southern HSC Trust T: **0800 7837 745**

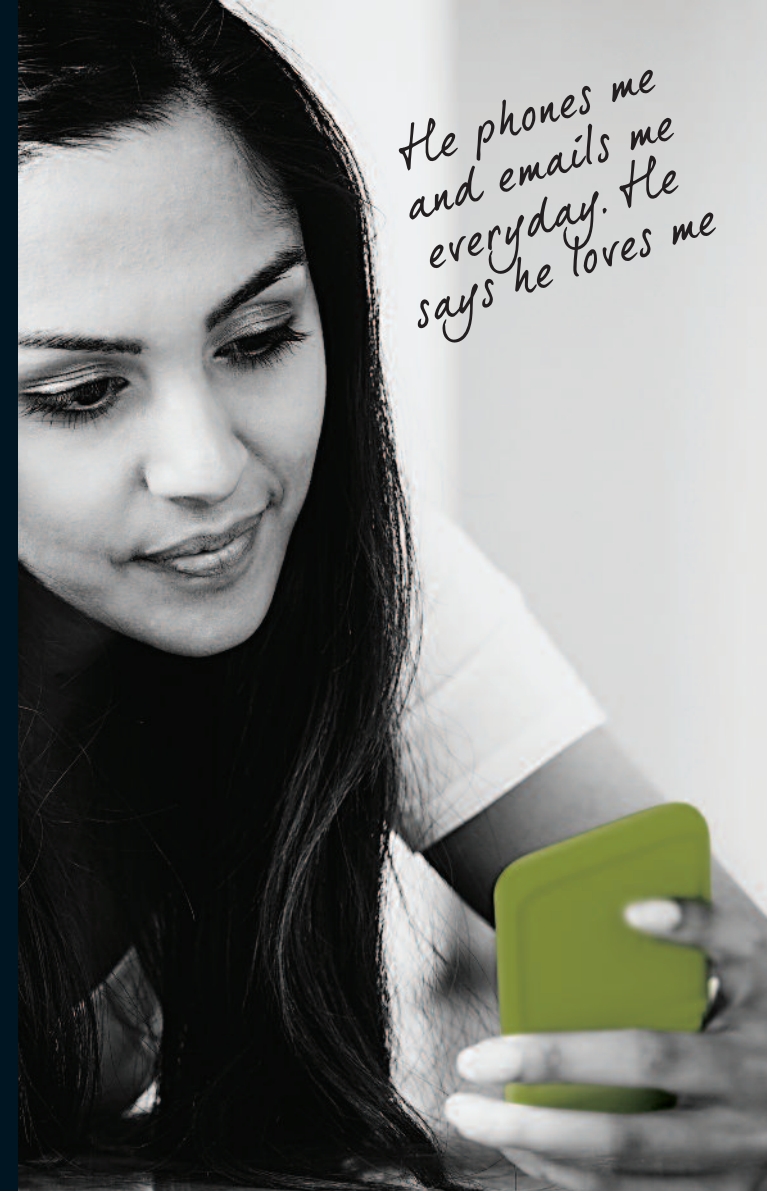
Western HSC Trust T: **028 7131 4090**

FOR FURTHER INFORMATION AND SOURCES OF HELP VISIT

www.safertoknow.info

Safeguarding Board for Northern Ireland,
18 Ormeau Avenue, Belfast, BT2 8HS.
Tel 028 9031 1611

*A Safeguarding Board for Northern Ireland
public awareness campaign*



**CHILD SEXUAL EXPLOITATION
THE MORE YOU KNOW THE MORE YOU SEE**

WWW.SAFERTOKNOW.INFO

CHILD SEXUAL EXPLOITATION

WWW.SAFERTOKNOW.INFO

CHILD SEXUAL EXPLOITATION IS A FORM OF SEXUAL ABUSE

Any child or young person under the age of 18, male or female, of any sexual orientation and from any background, can be a victim of Child Sexual Exploitation (CSE).

CSE CAN DAMAGE THEIR PHYSICAL, EMOTIONAL AND PSYCHOLOGICAL HEALTH

- Child Sexual Exploitation is a form of sexual abuse in which a young person is manipulated or forced into taking part in some form of sexual activity in return for something the young person needs or desires, for example; attention, a sense of belonging, affection, money, drugs, alcohol or accommodation.
- Many children fail to recognise that they are being exploited and are actually victims of abuse.
- The young person might think that their abuser is their friend or girl/boyfriend but the abuser is likely to be violent and /or physically or verbally abusive to get the young person to do what they want for them. They will control and manipulate the young person and try to isolate them from friends and family

There are a number of different forms that CSE can take which can include internet exploitation, exploitation at house parties, the movement of young people for the purpose of sexual exploitation and child abuse images e.g. asking a young person to send images of themselves.

THE MORE YOU KNOW THE MORE YOU SEE

There is no typical victim of Child Sexual Exploitation, but if any of the following seem familiar to you a young person could be at risk of CSE:

- A significantly older 'boyfriend' or 'friend' or lots of new friends
- Evidence or suspicion of substance misuse – drugs / alcohol/solvents/ legal highs
- Unexplained gifts or new possessions such as clothes, jewellery, mobile phones or money that can't be accounted for
- Regularly missing from home or school and / or staying out all night
- Receiving lots of texts / phone calls prior to leaving
- Change in physical appearance and or personal hygiene
- Low self esteem / self harm
- Change in behaviour – becoming aggressive and disruptive or quiet and withdrawn
- Increase in amount of time spent online and /or secretive use
- Sudden involvement in criminal behaviour or increased offending
- Physical symptoms or infections such as bruising, bite marks, sexually transmitted infections;

*The use of the words 'child', and 'young person' are interchangeable